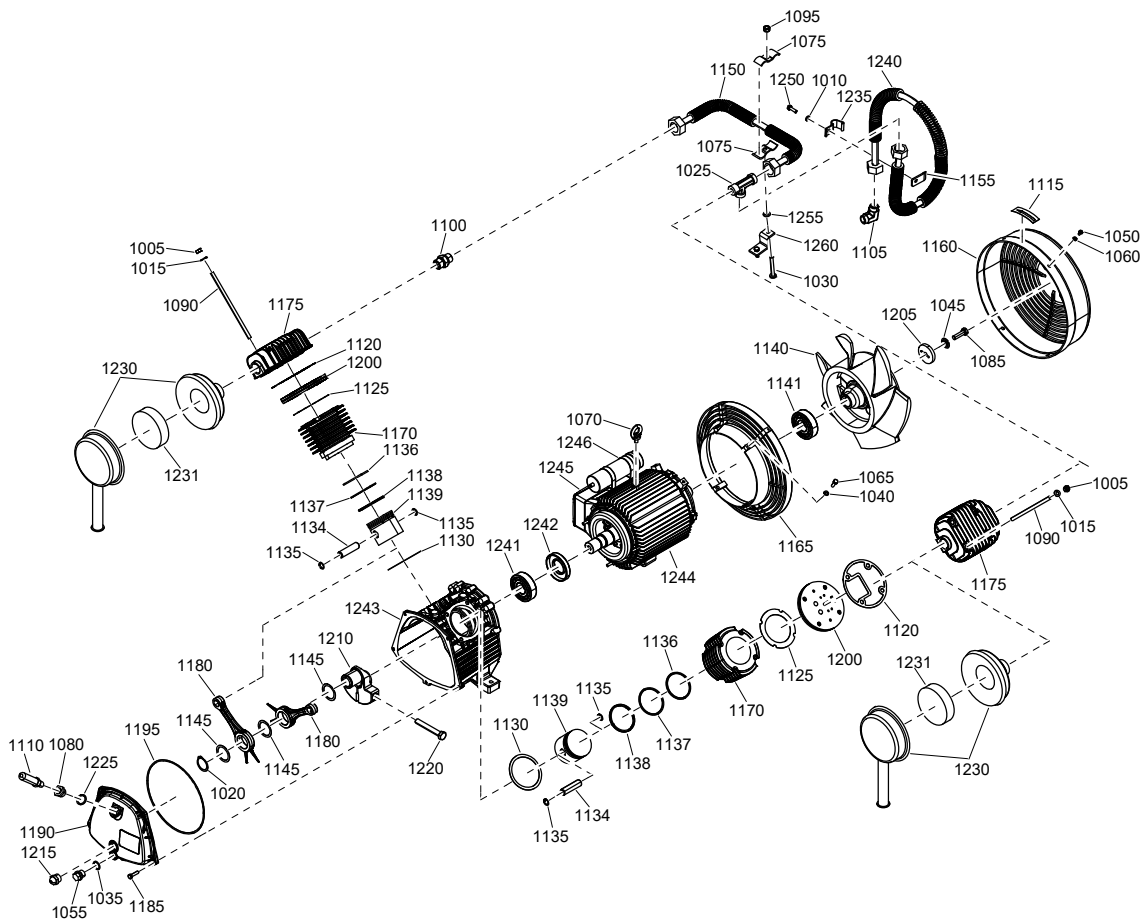


MEK-461-W



1305 5051 13-01

# Kit

<b>1305505113 - MEK-461-W</b>					
<b>REF</b>	<b>ITEM N.</b>	<b>ITEM DESCRIPTION</b>			<b>Q.TY</b>
?	2236115408	Filter element			1
<b>REF</b>	<b>ITEM N.</b>	<b>ITEM DESCRIPTION</b>			<b>QTY</b>
1200	1305 5089 05	Valve plate assy			1
<b>PISTON RING KIT CYLINDER CODE 2901320325</b>					
<b>REF</b>	<b>ITEM N.</b>	<b>ITEM DESCRIPTION</b>			<b>QTY</b>
1015	0301 2335 00	Washer			4
1120	1305 5089 10	Gasket			1
1125	1305 5088 90	Gasket			1
1136	1305 5088 80	Piston ring			1
1137	1305 5088 70	Piston ring			1
1138	1305 5088 60	Piston ring			1
1130	1305 5088 30	Gasket			1

# List

<b>1305505113 - MEK-461-W</b>					
<b>REF</b>	<b>ITEM N.</b>	<b>ITEM DESCRIPTION</b>	<b>ITEM DESCRIPTION</b>	<b>ITEM DESCRIPTION</b>	<b>Q.TY</b>
	<b>1305 5051 13</b>	<b>AGGR MEK 461 D</b>	<b>1</b>		<b>1</b>
1005	0266 2110 00	Nut	8		8
1010	0300 0130 92	Washer	1		1
1015	0301 2335 00	Washer	8		8
1020	2236 1008 52	Seeger	1		1
1025	1305 5093 47	Elbow coupling	1		1
1030	2236 1006 55	Screw	1		1
1035	2236 1007 85	Washer	1		1
1040	1305 5087 55	Spring washer	4		4
1045	1305 5087 85	Locking washer	1		1
1050	1305 5087 75	Screw	4		4
1055	1305 5089 60	Plug screw	1		1
1060	1305 5087 95	Spring washer	4		4
1065	0147 1247 03	Screw	4		4
1070	1305 5088 45	Eyebolt	1		1
1075	1305 5093 50	Clamp	2		2
1080	1305 5088 15	Reducing nipple	1		1
1085	0147 1364 03	Hexagon screw	1		1
1090	1305 5087 45	Stud	8		8
1095	0291 1110 00	Locknut	1		1
1100	1305 5093 48	Coupling	1		1
1105	1305 5093 28	Elbow coupling	1		1
1110	2236 1030 01	Tappo	1		1
1115	1305 5092 85	Label	1		1
1120	1305 5089 10	Gasket	2		2
1125	1305 5088 90	Gasket	2		2
1130	1305 5088 30	Gasket	2		2

<b>1305505113 - MEK-461-W</b>					
<b>REF</b>	<b>ITEM N.</b>	<b>ITEM DESCRIPTION</b>	<b>ITEM DESCRIPTION</b>	<b>ITEM DESCRIPTION</b>	<b>Q.TY</b>
	<b>1305 5093 42</b>	<b>Piston</b>			<b>2</b>
1134	1305 5088 50	Piston pin			2
1135	0335 2118 00	Circlip			4
1136	1305 5088 80	Piston ring			2
1137	1305 5088 70	Piston ring			2
1138	1305 5088 60	Piston ring			2
1139	1305 5088 40	Piston			2
1140	1305 5029 00	Fan flywheel			1
1141		Fan bearing			1
1145	1305 5087 40	Disc			3
1150	1305 5093 49	Cooler pipe			1
1155	1305 5092 50	Support			1
1160	1305 5087 30	Fancover			1
1165	1305 5087 10	Fancover support			1
1170	1305 5019 00	Cylinder			2
1175	1305 5026 00	Cylinder head			2
1180	1305 5046 00	Connecting rod			2
1185	0147 1249 03	Hexagon screw			5
1190	1305 5044 00	Crankcase cover			1
1195	1305 5000 26	New gasket			1
1200	1305 5089 05	Valve plate assy			2
1205	1305 5093 44	Disc			1
1210	1305 5007 00	Crankshaft			1
1215	1305 5087 80	Sight glass			1
1220	0147 1110 12	Screw			1
1225	0653 9098 00	Flat gasket			1
1230	1305 5089 20	Suction filter			2
1231	2236 1154 08	Filter element			2
1235	1305 5094 27	Clamp fastening			1
1240	1305 5093 46	Cooler pipe			1

<b>1305505113 - MEK-461-W</b>					
<b>REF</b>	<b>ITEM N.</b>	<b>ITEM DESCRIPTION</b>	<b>ITEM DESCRIPTION</b>	<b>ITEM DESCRIPTION</b>	<b>Q.TY</b>
	<b>1305 5093 54</b>	<b>Crankcase motor assy</b>			<b>1</b>
1241	0502 3106 00	Bearing ball			1
1242	1305 5088 25	Radial shaft sealing ring			1
1243	1503 8292 00	Crankcase			1
1244	1305 5093 53	Motor			1
1245	1088 0003 08	Terminal board			1
1246	1088 0003 11	Capacitor			1
1250	0147 1247 03	Screw			4
1255	0301 2335 00	Washer			2
1260	1305 5094 58	Support			1