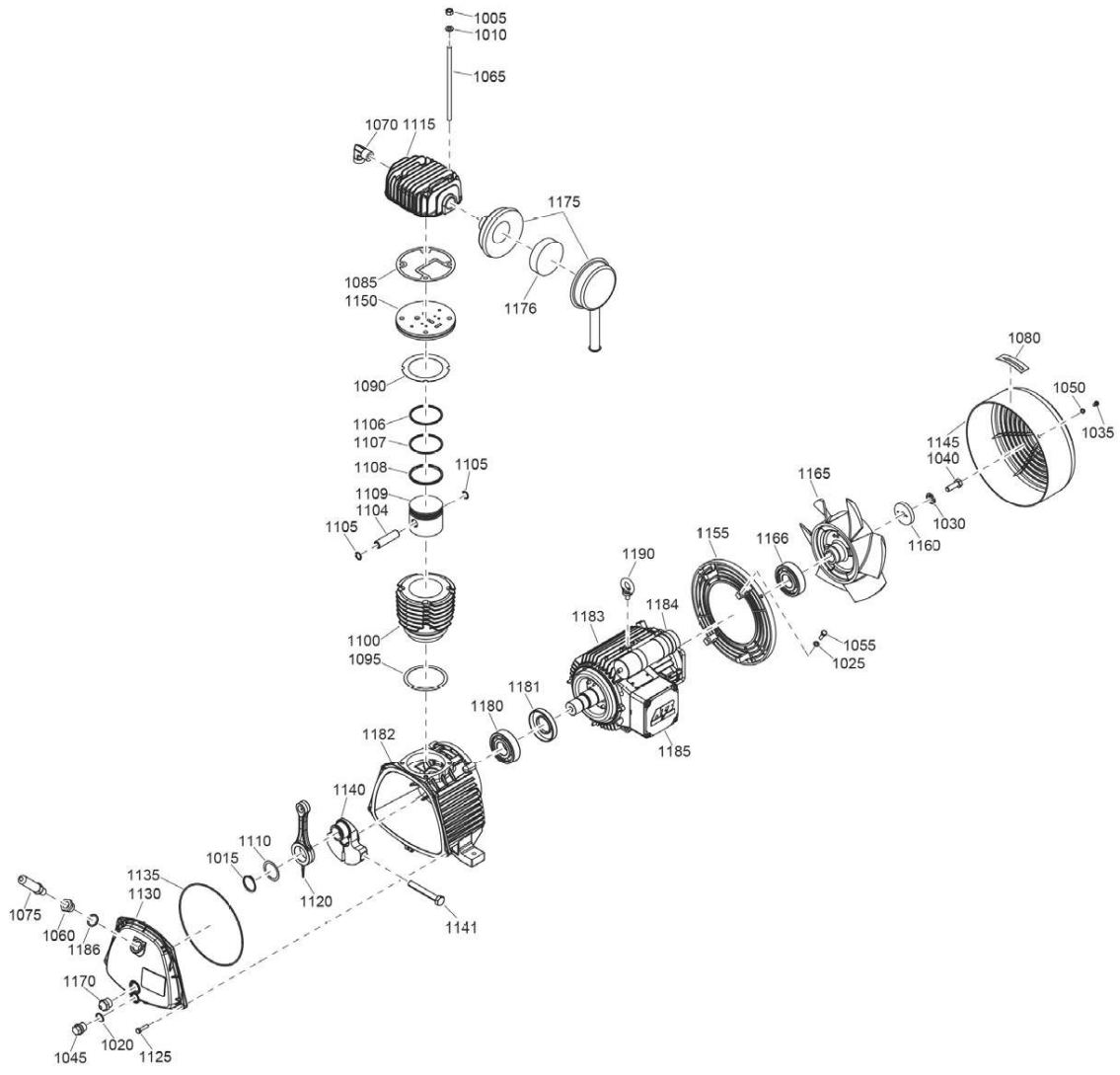


MKK-301-W



1305 5051 10-01

# Kit

<b>1305505110 - MKK-301-W</b>					
<b>REF</b>	<b>ITEM N.</b>	<b>ITEM DESCRIPTION</b>			<b>Q.TY</b>
?	2236115408	Filter element			1
<b>REF</b>	<b>ITEM N.</b>	<b>ITEM DESCRIPTION</b>			<b>QTY</b>
1150	1305 5089 05	Valve plate assy			1
<b>PISTON RING KIT CYLINDER CODE 2901320325</b>					
<b>REF</b>	<b>ITEM N.</b>	<b>ITEM DESCRIPTION</b>			<b>QTY</b>
1010	0301 2335 00	Washer			4
1085	1305 5089 10	Gasket			1
1090	1305 5088 90	Gasket			1
1106	1305 5088 80	Piston ring			1
1107	1305 5088 70	Piston ring			1
1108	1305 5088 60	Piston ring			1
1095	1305 5088 30	Gasket			1

# List

<b>1305505110 - MKK-301-W</b>					
<b>REF</b>	<b>ITEM N.</b>	<b>ITEM DESCRIPTION</b>	<b>ITEM DESCRIPTION</b>	<b>ITEM DESCRIPTION</b>	<b>Q.TY</b>
	<b>1305 5051 10</b>	<b>AGGR MKK 301 W</b>			<b>1</b>
1005	0266 2110 00	Nut			4
1010	0301 2335 00	Washer			4
<b>1015</b>	<b>2236 1008 52</b>	<b>Circlip</b>			<b>1</b>
1020	2236 1007 85	Washer			1
1025	1305 5087 55	Spring washer			4
1030	1305 5087 85	Locking washer			1
1035	1305 5087 75	Screw			4
1040	0147 1363 03	Hexagon screw			1
1045	1305 5089 60	Plug screw			1
1050	1305 5087 95	Spring washer			4
1055	0147 1247 03	Screw			4
1060	1305 5088 15	Reducing nipple			1
1065	1305 5087 45	Stud			4
1070	1305 5092 90	Elbow coupling			1
1075	2236 1030 01	Tappo			1
1080	1305 5092 85	Label			1
1085	1305 5089 10	Gasket			1
1090	1305 5088 90	Gasket			1
1095	1305 5088 30	Gasket			1
1100	1305 5016 00	Cylinder			1
	<b>1305 5093 42</b>	<b>Piston</b>			<b>1</b>
1104	1305 5088 50	Piston pin			1
1105	0335 2118 00	Circlip			2
1106	1305 5088 80	Piston ring			1

<b>1305505110 - MKK-301-W</b>					
<b>REF</b>	<b>ITEM N.</b>	<b>ITEM DESCRIPTION</b>	<b>ITEM DESCRIPTION</b>	<b>ITEM DESCRIPTION</b>	<b>Q.TY</b>
1107	1305 5088 70	Piston ring			1
1108	1305 5088 60	Piston ring			1
1109	1305 5088 40	Piston			1
1110	1305 5087 40	Disc			1
1115	1305 5026 00	Cylinder head			1
1120	1305 5046 00	Connecting rod			1
1125	0147 1249 03	Hexagon screw			5
1130	1305 5044 00	Crankcase cover			1
1135	1305 5000 26	New gasket cover/crankcase			1
1140	1305 5002 00	Crankshaft			1
1141		Screw			1
1145	1305 5092 80	Fancover			1
1150	1305 5089 05	Valve plate assy			1
1155	1305 5092 70	Fancover support			1
1160	1305 5087 20	Disc			1
1165	1305 5027 00	Flywheel			1
1166		Fan bearing			1
1170	1305 5087 80	Sight glass			1
1175	1305 5089 20	Suction filter			1
1176	2236 1154 08	Filter element			1
	<b>1305 5093 43</b>	<b>Crankcase motor assy</b>			<b>1</b>
1180	0502 3106 00	Bearing ball			1
1181	1305 5088 25	Radial shaft sealing ring			1
1182	1305 5041 00	Crankcase			1
1183	1305 5093 40	Motor			1
1184	1088 0003 10	Capacitor			1
1185	1088 0003 05	Terminal board			1
1186	0653 9098 00	Flat gasket			1
1190	1305 5088 45	Eyebolt			1