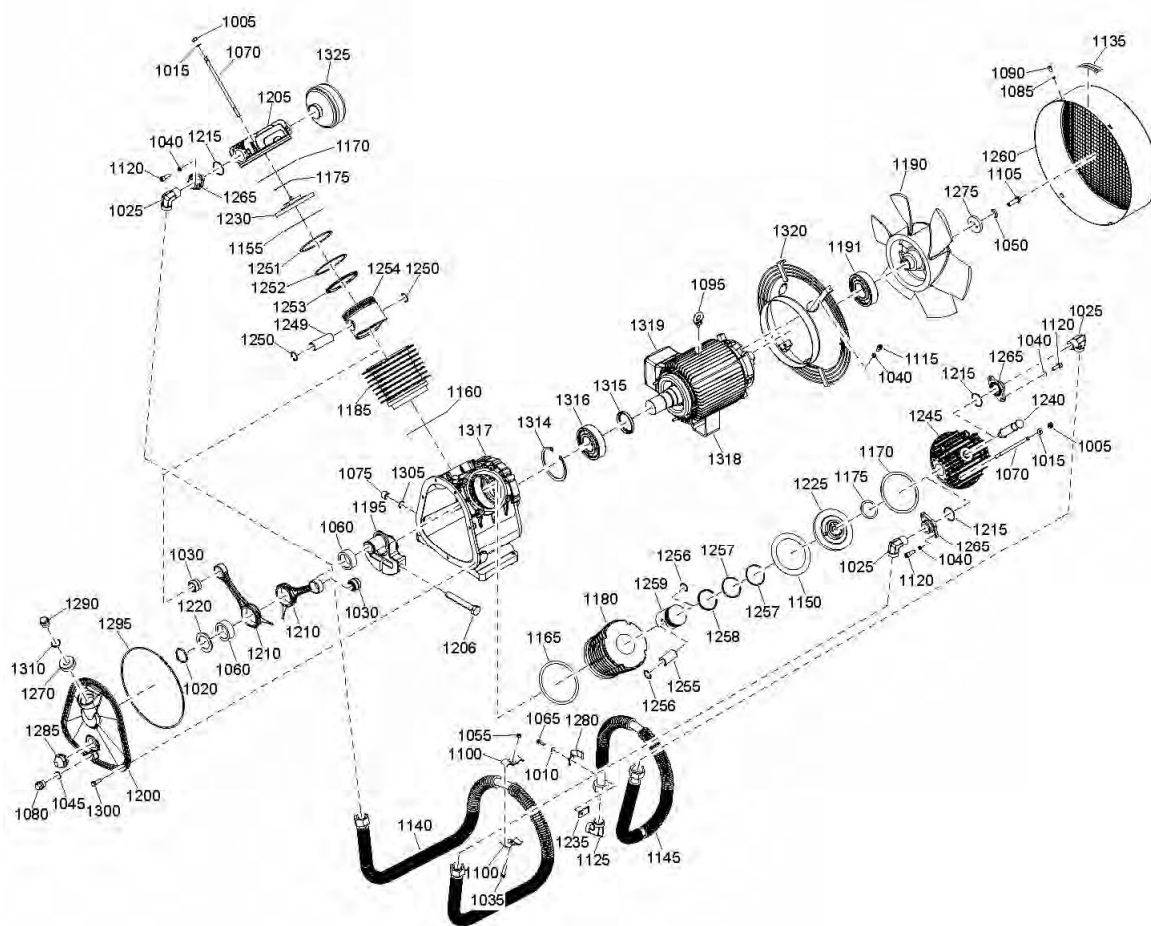


MEK-851-D



1305 5051 15-01

# Kit

<b>1305505115 - MEK-851-D</b>					
<b>REF</b>	<b>ITEM N.</b>	<b>ITEM DESCRIPTION</b>			<b>QTY</b>
1225	1305 5091 50	Valve plate assy			1
1230	1305 5090 80	Valve plate assy			1
<b>PISTON RING KIT LP CYLINDER CODE 2901320327</b>					
<b>REF</b>	<b>ITEM N.</b>	<b>ITEM DESCRIPTION</b>			<b>QTY</b>
1015	0301 2335 00	Washer			4
1170	1305 5090 90	Gasket			1
1175	1305 5091 00	Gasket			1
1155	1305 5090 60	Gasket			1
1251	6212 8644 00	Piston ring			1
1252	6212 8665 00	Piston ring			1
1253	6212 8655 00	Piston ring			1
1160	1305 5093 63	Gasket			1
<b>PISTON RING KIT HP CYLINDER CODE 2901320345</b>					
<b>REF</b>	<b>ITEM N.</b>	<b>ITEM DESCRIPTION</b>			<b>QTY</b>
1015	0301 2335 00	Washer			4
1170	1305 5090 90	Gasket			1
1175	1305 5091 00	Gasket			1
1150	1305 5093 11	Gasket			1
1257	6212 8649 00	Segmento			2
1258	6212 8661 00	Segmento			1
1165	1305 5090 20	Gasket			1

# List

1305505115 - MEK-851-D					
REF	ITEM N.	ITEM DESCRIPTION	ITEM DESCRIPTION	ITEM DESCRIPTION	Q.TY
	1305 5051 15	AGGR MEK 851 D			1
005	0266 2110 00	Nut			8
010	0300 0130 92	Washer			2
015	0301 2335 00	Washer			8
020	0335 1140 00	Circlip			1
025	1305 5091 90	Elbow coupling			3
030	0515 3103 12	Needle bearing			2
035	0147 1109 69	Hexagon screw			1
040	1305 5093 70	Spring washer			10
045	2236 1007 85	Rond.			1
050	1305 5087 85	Locking washer			1
055	0291 1108 00	Locknut			1
060	1305 5093 64	Bearing needle			2
065	0147 1247 03	Screw			1
070	1305 5093 61	Stud			8
075	2236 1001 68	Tappo			1
080	1305 5089 60	Plug screw			1
085	1305 5087 95	Spring washer			4
090	0147 1109 81	Hexagon screw			4
095	1305 5088 45	Eyebolt			1
100	1305 5093 50	Clamp			2
105	0147 1364 03	Hexagon screw			1
110	0291 1110 00	Locknut			1
115	2236 1005 82	Vite tcei 8x16 r80znt-b din912			4
120	2236 1005 95	Vite tcei 8x25 r80znt-b din912			6
125	1305 5092 30	Elbow coupling			1
130	6214 3415 00	Tappo			1

<b>1305505115 - MEK-851-D</b>					
<b>REF</b>	<b>ITEM N.</b>	<b>ITEM DESCRIPTION</b>	<b>ITEM DESCRIPTION</b>	<b>ITEM DESCRIPTION</b>	<b>Q.TY</b>
1135	1305 5092 85	Label			1
1140	1305 5093 65	Cooler pipe			1
1145	1305 5093 62	Cooler pipe			1
1150	1305 5093 11	Gasket			1
1155	1305 5090 60	Gasket			1
1160	1305 5093 63	Gasket			1
1165	1305 5090 20	Gasket			1
1170	1305 5090 90	Gasket			2
1175	1305 5091 00	Gasket			2
1180	1305 5021 00	Cylinder			1
1185	1305 5010 00	Cylinder			1
1190	1305 5028 00	Flywheel fan			1
1191		Fan bearing			1
1195	1305 5006 00	Crankshaft			1
1200	1305 5045 00	Crankcase cover			1
1205	1305 5024 00	Cylinder head			1
1206		Screw			1
1210	1305 5048 00	Rod connecting			2
1215	1305 5091 60	O-ring			3
1220	1305 5090 10	Disc			1
1225	1305 5091 50	Valve plate assy			1
1230	1305 5090 80	Valve plate assy			1
1235	1305 5092 50	Support			1
1240	1305 5091 70	Safety valve			1
1245	1305 5025 00	Cylinder head			1

<b>1305505115 - MEK-851-D</b>					
<b>REF</b>	<b>ITEM N.</b>	<b>ITEM DESCRIPTION</b>	<b>ITEM DESCRIPTION</b>	<b>ITEM DESCRIPTION</b>	<b>Q.TY</b>
	<b>1305 5054 00</b>	<b>Piston</b>			<b>1</b>
1249	1305 5090 30	Piston pin			1
1250	0335 2127 00	Circlip			2
1251	6212 8644 00	Piston ring			1
1252	6212 8665 00	Piston ring			1
1253	6212 8655 00	Piston ring			1
1254	1305 5093 60	Piston			1
	<b>1305 5053 00</b>	<b>Piston</b>			<b>1</b>
1255	1305 5091 20	Piston pin			1
1256	0335 2127 00	Circlip			2
1257	6212 8649 00	Segmento			2
1258	6212 8661 00	Segmento			1
1259	1305 5095 00	Piston			1
1260	1305 5089 80	Fancover metal			1
1265	1305 5038 00	Flange			3
1270	1305 5090 01	Bushing			1
1275	1305 5093 44	Disc			1
1280	1305 5092 60	Fastening clamp			1
1285	1305 5089 90	Sight glass			1
1290	0686 3716 02	Hexagon plug			1
1295	1305 5093 56	Gasket			1
1300	0147 1109 88	Hexagon screw			7
1305	1305 5094 51	Gasket flat			1
1310	0653 9098 00	Flat gasket			1

<b>1305505115 - MEK-851-D</b>					
<b>REF</b>	<b>ITEM N.</b>	<b>ITEM DESCRIPTION</b>	<b>ITEM DESCRIPTION</b>	<b>ITEM DESCRIPTION</b>	<b>Q.TY</b>
	<b>1305 5093 59</b>	<b>Crankcase motor assy</b>			<b>1</b>
1314	0335 2169 00	Int.circlip			1
1315	1305 5093 58	Radial seal ring			1
1316	0502 1090 21	Bearing ball			1
1317	1305 5042 00	Crankcase			1
1318	1305 5093 57	Motor			1
1319	1088 0003 02	Terminal board			1
1320	1305 5089 70	Fancover support			1
1325	1305 5096 00	Metal filter			1
1330	2236 1102 20	Dowel screw			1
1335	1305 5094 83	Plate agre			1